

ARCHITECTS, YOU ARE OUR FOCUS



What is important to you and your client is important to us. Ayres' design process involves early analysis to identify creative solutions that steer the project to a better result instead of putting it on the path to "the way it's always been done."

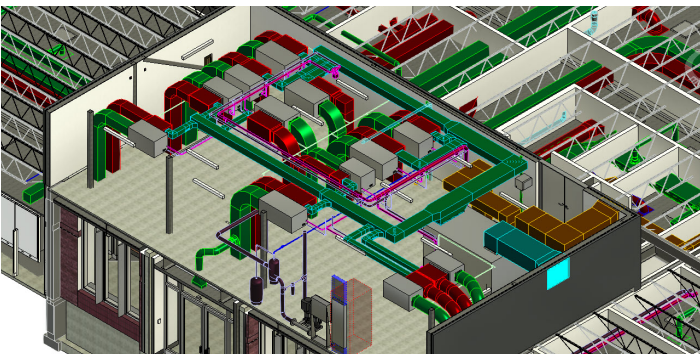
WE PROVIDE
Smart,
Creative
Solutions

AYRES





The proverbial cookie cutter doesn't cut it with your projects. Each project is unique and deserves a custom solution. Each system needs to be designed to actually fit your project, not the other way around.



“We’ve had a close working relationship with ... the team. There’s never been a reason for us to entertain other MEP consultants out there because they’re exceeding our expectations.”

Brad Finerock

Director of Business Development, Finney's Crafthouse & Kitchen

Right Tools = Right Results

Fit and finish and functionality are important, and we use the tools that assist in getting that desired result. Robust capabilities in the following programs translate ideas into carefully thought-through drawings and details:

- Revit
- AutoCAD
- Autodesk Construction Cloud

You're careful to remain aware of codes, but it never hurts when your subconsultant is just as meticulous as you are. Ayres often plays the role of local code expert and liaison to regulators.



All Eyes on You
and Your Client

Interested in talking about your project and how you can get help with making it the best it can be?

We're ready to listen and excited to see how we can help you!

Contact Ayres today.

☎ 800.666.3103 ✉ AyresContact@AyresAssociates.com 🌐 www.AyresAssociates.com

