



Pedestrian Bridge.

For Ayres Associates news and more details on services, go to:

www.AyresAssociates.com

*creative.
dynamic.
connected.*

precise.

accurate.

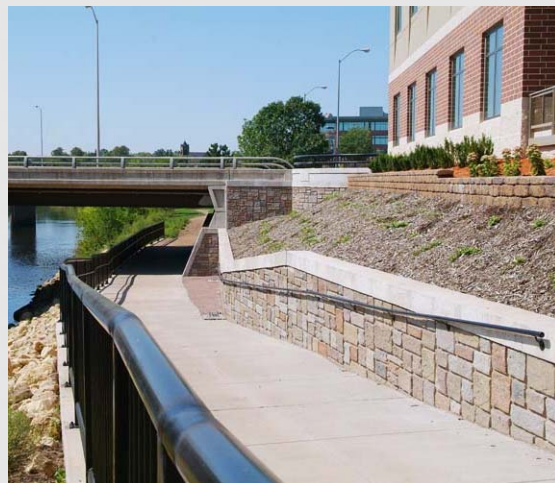


A recreational trail system benefits users ranging from beginning bicyclists to triathletes in training. Pedestrian and bike trails promote recreation, fitness, environmental, and social goals in a community. However, trails can lose value if they end at streambanks or busy intersections.

The structural specialists at Ayres Associates know how to take your pedestrian trails and walkways over or under whatever blocks them. Our structural engineers have designed bridges, underpasses, and tunnels for recreational trail systems throughout the nation.

In urban areas, a pedestrian structure allows communities to make full use of their pathways and are a key component in keeping users safe. Instead of crossing in front of traffic, pedestrians, bicyclists, and other users can avoid the traffic altogether. A well-designed structure and approaches heighten the accessibility of walkways and trails for users of all ability levels. Pedestrian bridges also reduce the environmental impact of urban transportation systems:

- Traffic moves with fewer starts and stops because fewer pedestrians and bicyclists are crossing busy highways.
- Safe crossings encourage greater use of pedestrian and bicycle systems, reducing a community's carbon footprint.
- Pedestrian systems generally create access to parks and recreational areas, helping to preserve urban greenways.



We continually strive for *innovative*, *smart* solutions, and we maintain a *genuine* dedication to our clients, our community, and our employees.



2008 "Best of the Best" award from McGraw-Hill Construction, publisher of Engineering News-Record magazine

Attention to aesthetics and environmental impact is especially important for pedestrian bridges in recreational settings. A poorly designed structure can detract from the very aspects of the trail that users enjoy most – natural beauty, wildlife, and tranquility. We believe our structures, wherever they are located, should be beautiful as well as functional.

The engineers at Ayres Associates work with trail users and other stakeholders to design aesthetic treatments that blend with the environment, whether that environment is a rural rails-to-trails system or an urban greenway, a fishing pier or a boardwalk. Stone facing, special railing and lighting, and concrete form liners all have been used on bridges to help them fit naturally into their environments.

We pay close attention to the hydraulic impact of water crossings, designing these structures so they don't contribute to and are able to withstand flooding. Streambank stabilization is also designed to fit into the natural environment.

Whether the structure is part of an urban or rural setting, it is designed to be safe, easy to maintain, and accessible by emergency personnel. We design bridges that will serve their users and their communities well for years to come.



services

- Planning and public involvement
- Context-sensitive design
- Design for new and rehabilitated structures
- Underwater, routine, and complex inspections
- Construction administration and observation
- Steel bridge painting



Whether we're facing a *challenging* project or helping a longtime client with routine design services, we're *committed* to delivering *responsive* and personal service.